

ADPRO MULTI-SITE PERIMETER SUCCESS STORY

MULTI-SITE PERIMETER SECURITY SOLUTION FOR £2 BILLION SOLAR PARK

Success Story

THE CHALLENGE

The client is one of the UK's leading providers of solar power, operating solar parks at 40 sites across the country. Combined, the power generated is equivalent to the output of a nuclear power station. Due to their vast scale, remote location and high value technology, solar parks are especially vulnerable to theft; each site utilises assets worth around £6 million, with a combined value across all sites of £2 billion. Effective security is of critical importance.

The challenge was to provide remote, centrally monitored 24/7 surveillance coverage across all sites, thereby eliminating the need for manned guarding and minimising overheads. There were also environmental issues to consider: to satisfy planning restrictions, the client was required to return livestock to the sites once they were operational. It was therefore vital that the system provided effective surveillance, while also ensuring that grazing livestock would not trigger false alarms.

Harsh weather conditions presented an additional challenge – installation took place during the wettest winter in 50 years, making sites difficult to access.

THE SOLUTION

To arrive at the best solution, installers ISD-Tech conducted side-by-side trials using three comparable products over a fortnight period. Due to the issue of grazing animals activating the detectors, trials were carried out using hired livestock.

After carefully evaluating all three products, the decision was taken to install the ADPRO Perimeter, Multi-site and Enterprise Security Solution by Xtralis. The system delivers reliable remote monitoring, enabling security threats to be detected and assessed fast and efficiently. When an intruder is detected, the ADPRO FastTrace 2E Remotely Managed Multi-service Gateway (RMG) transmits high-quality images to a remote monitoring centre or mobile handset, so that operators are able to see exactly what is happening and take appropriate action.

FastTrace 2E is used in conjunction with ADPRO IntrusionTrace, a primary detection system used for operational alerts and eventbased recording in sterile zones – i.e. monitored zones between two security fences.



The Xtralis solution was of marginally higher cost

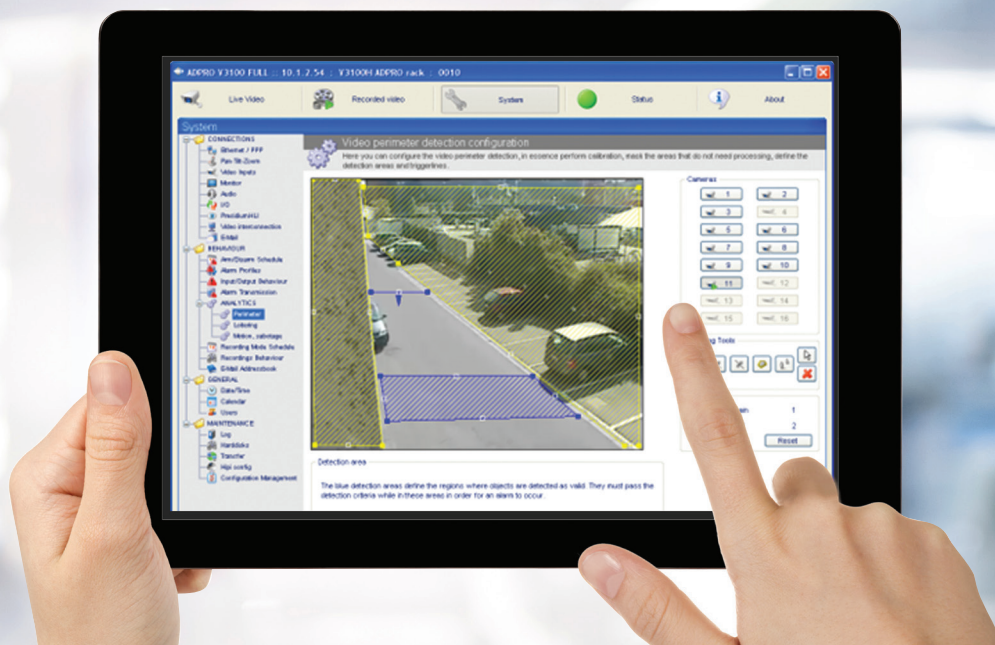
to install than competitor systems.

However, the ongoing cost of ownership is dramatically lower, because it operates via a 3G connection, which demands less bandwidth and compression. Importantly, ADPRO IntrusionTrace has been awarded Primary Detection System Classification from the UK Home Office Scientific Development Branch (HOSDB).

It is also officially approved as a primary detection system for operational use in sterile environments by the Imagery Library for Intelligent Detection Systems (i-LIDS), the UK government's benchmark for video analytics (VA) systems.



Honeywell



THE OUTCOME

The ADPRO system paid for itself within the first 12 months of deployment. All sites are now remotely monitored from a central location, eliminating the need for manned guarding and massively reducing security costs. Since installation was completed, there have been attempted break-ins at several sites, each of which was detected and prevented by Xtralis technology.

The system also enables detection areas to be adjusted remotely without a need to visit the site, which significantly reduces the incidence of false alarms while saving on unnecessary call-out costs. This was a key factor for the client in selecting Xtralis.

Vitaly, ADPRO IntrusionTrace now enables the client to differentiate between a grazing animal and an actual intruder or thief, and livestock have now been reintroduced to the sites, just eight months after the full installation was completed.

The ADPRO solution has also been signed off by the client's insurers, resulting in reduced premiums.

ABOUT THE INSTALLER

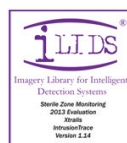
ISD-Tech specialises in the design, installation and maintenance of multi-disciplined security solutions, with a combined industry experience in excess of 100 years.



ISD-Tech has delivered security solutions at 60-plus sites deploying Xtralis technology. Together the two companies have built a strong and stable partnership.

"WE STRONGLY RECOMMEND THAT OUR CUSTOMERS ONLY DEPLOY I-LIDS PRIMARY DETECTION-CERTIFIED VIDEO ANALYTICS SOLUTIONS... WE ARE EXCITED TO HEAR THAT XTRALIS INTRUSIONTRACE IS NOW I-LIDS CERTIFIED FOR PRIMARY DETECTION FOR OPERATIONAL USE IN STERILE ENVIRONMENTS..."

Markus Pendl, Sachverständigenbüro
Markus Pendl Geiseltasteig



Project

Perimeter protection

End User/Location

UK-wide solar parks

Industry

Power/Utilities

Installation Partner

Integrated Security Design Ltd
(ISD-Tech)
I bought through Norbain SD.

Solutions

- Xtralis ADPRO IntrusionTrace (1500 channels); FastTrace 2E

Honeywell Commercial Security

715 Peachtree Street NE
Atlanta, GA 30308
1.800.323.4576
www.honeywell.com

HSV-ADPRO-SOLARPARK-02-US(0220)CS-C
© 2020 Honeywell International Inc.

Honeywell